



Generic AI VS. Native Legal AI

The practical reality

Generic AI is powerful - but it's built for everything. Legal work, on the other hand, demands precision, context, and accountability.

Generic AI



General-purpose, multi-domain tools



You get broad answers, but not jurisdiction-specific clarity



Citations may look right, but need manual verification [Risk of hallucinations]



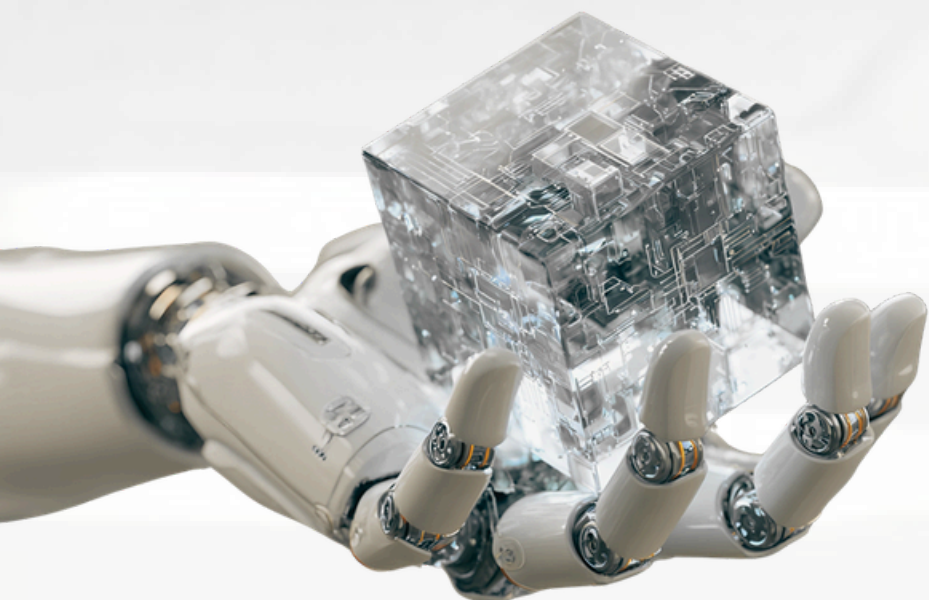
Document structure can break



OCR and translations often miss legal nuance



Teams spend more time validating than actually using the output



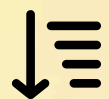
Native Legal AI



Trained on verifiable legal data, not generic text



Understands jurisdiction (e.g., Indian law) deeply



Preserves formatting, citations, and references



Provides traceability back to source documents



Handles scanned files and legal translations with context



Enables instant verification, not post-checking



Designed for court-ready outputs, not just drafts



Don't just adopt AI.

Use the right AI for the job, that reduces risk, ensures reliability, and delivers real value.



www.manupatra.ai

